

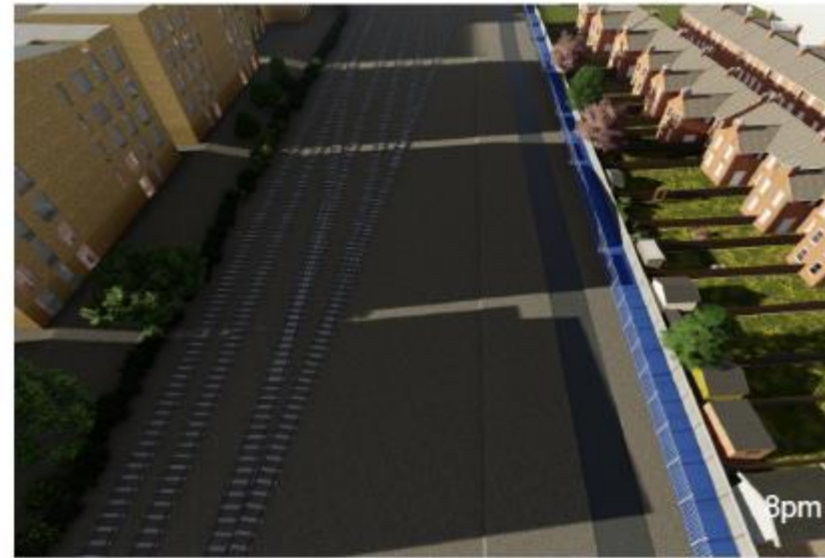
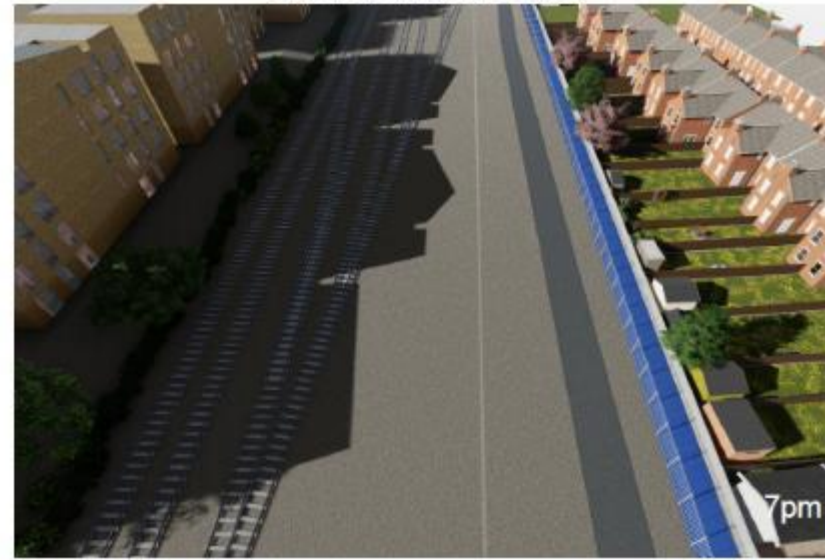
# Shade modelling

- GTR with SNC Lavalin have conducted shade modelling
- The modelling illustrates different times of the day at different times of the year
- The development plans of the flats on the west side of the railway have been included to create a complete representation

June 1st



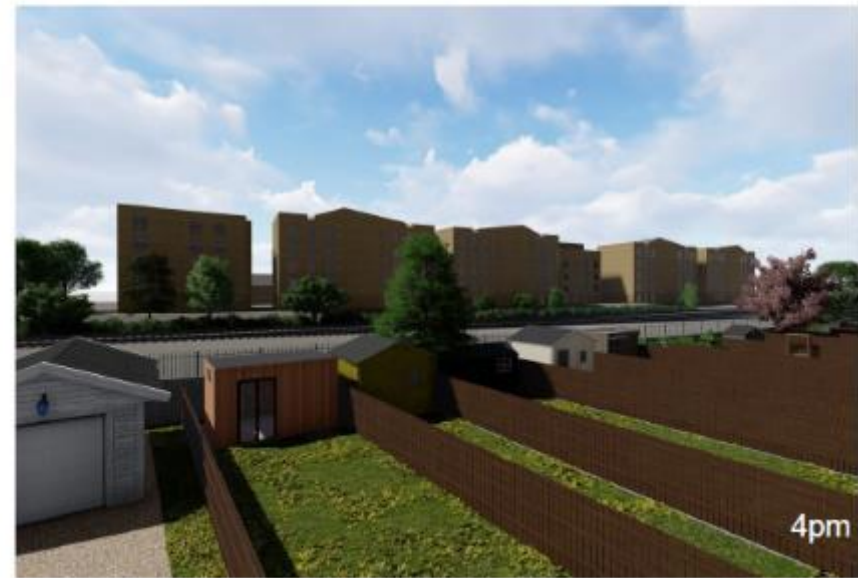
June 1st



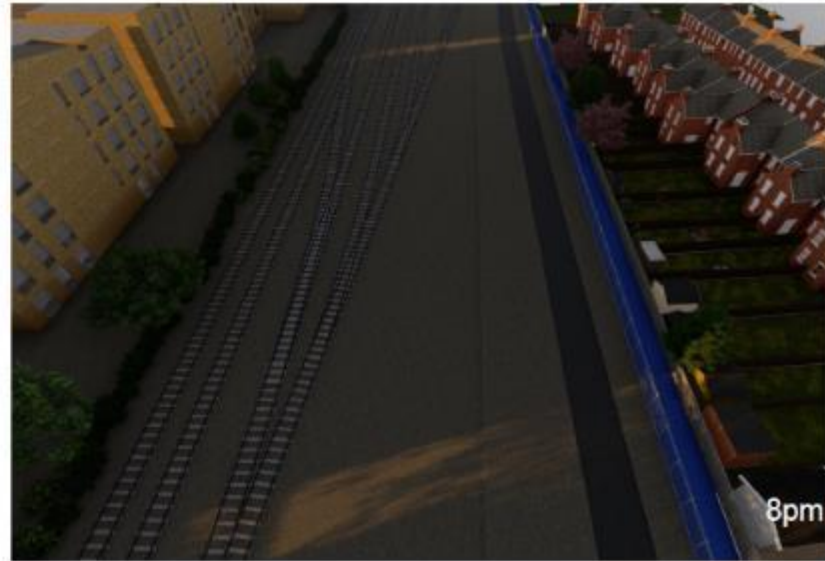
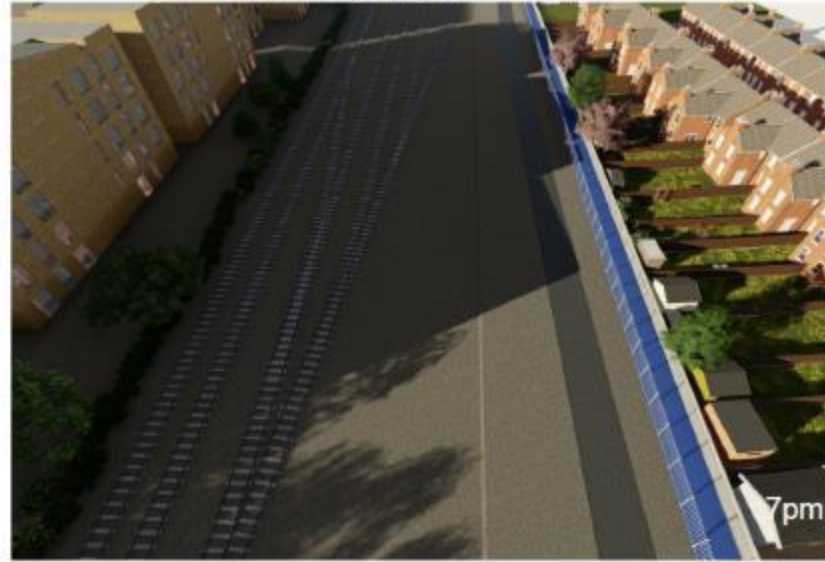
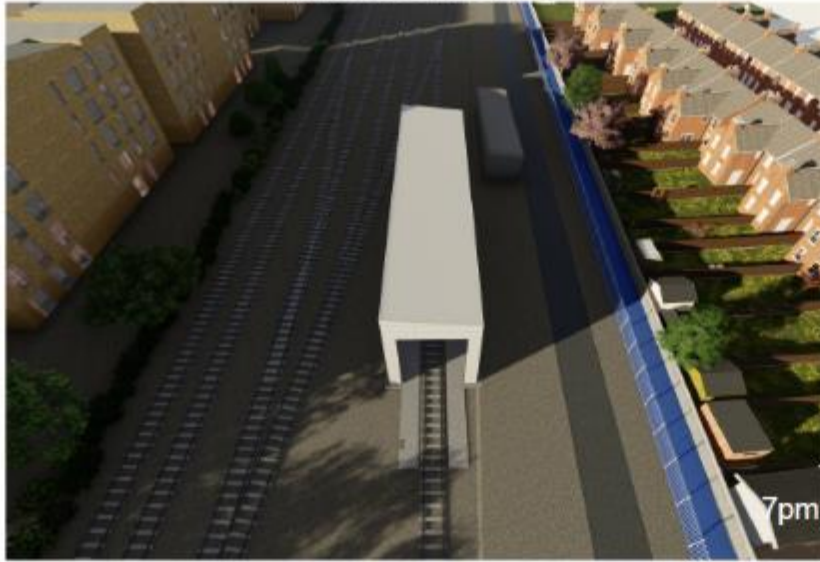
June 1st



September 1st



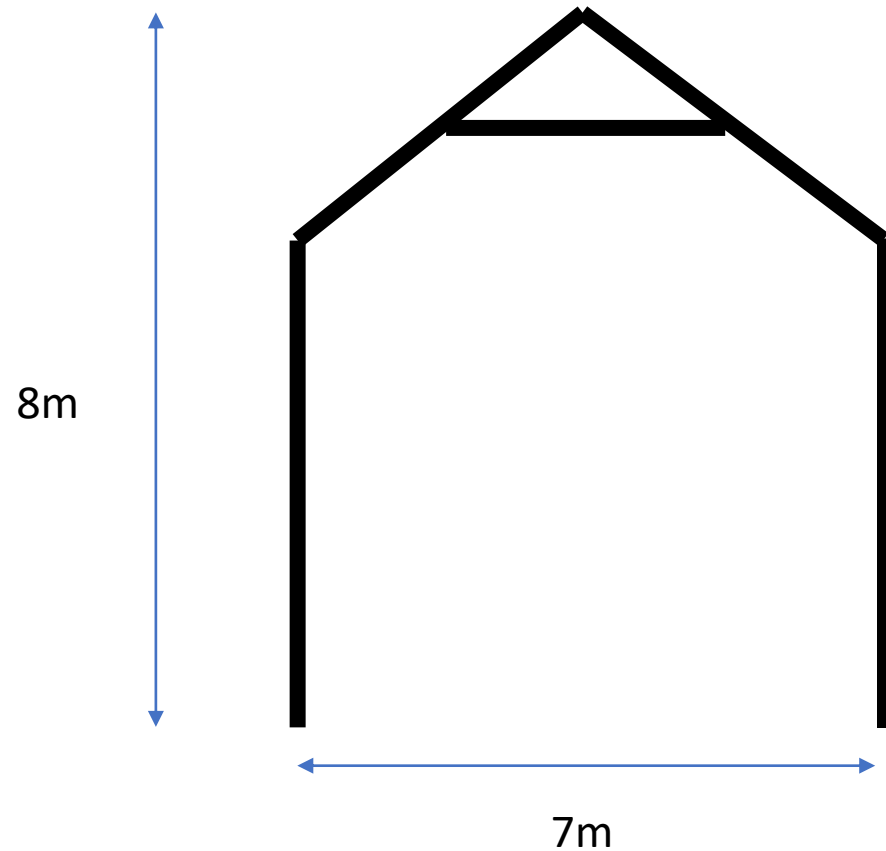
September 1st



September 1st



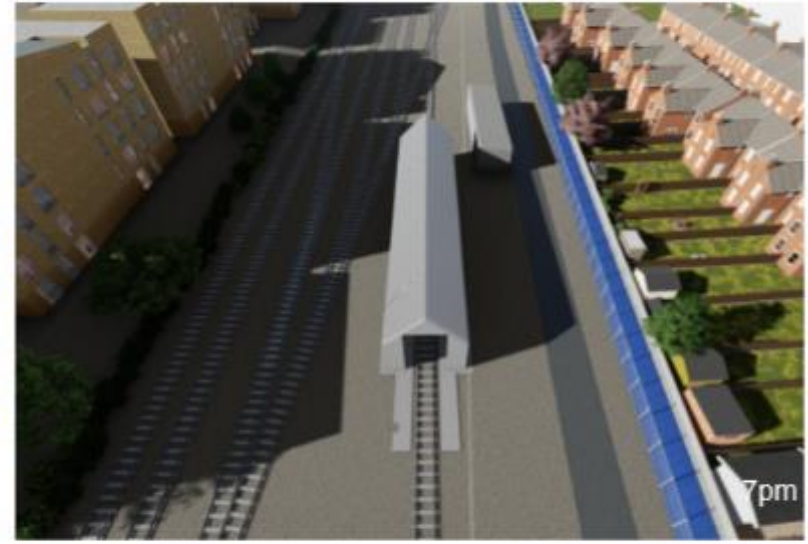
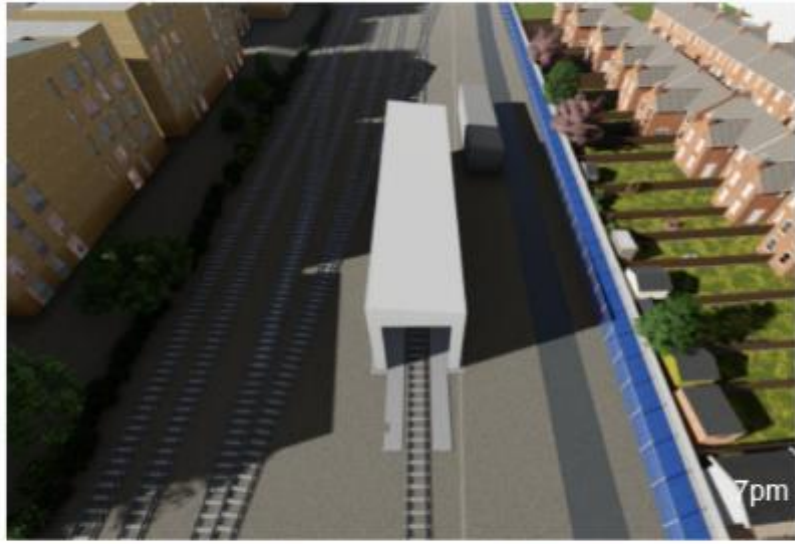
# New enclosure design



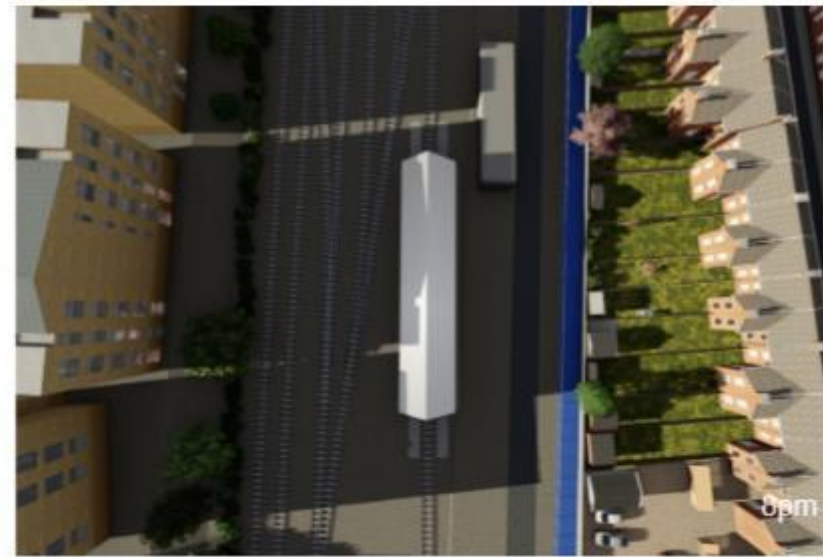
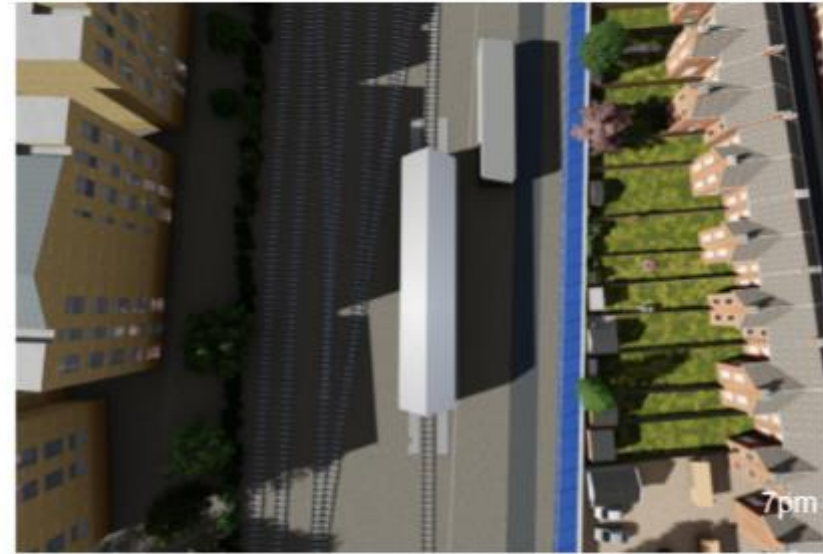
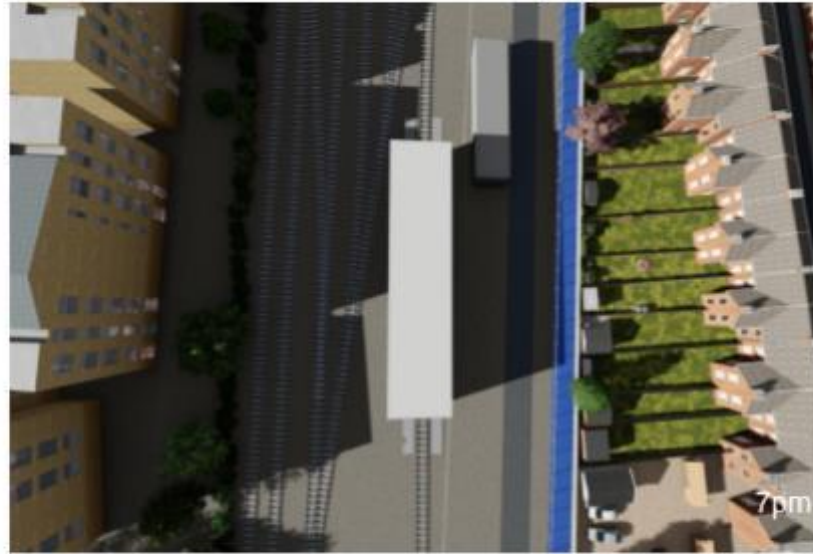
This was applied to the shade modelling to give the following results.



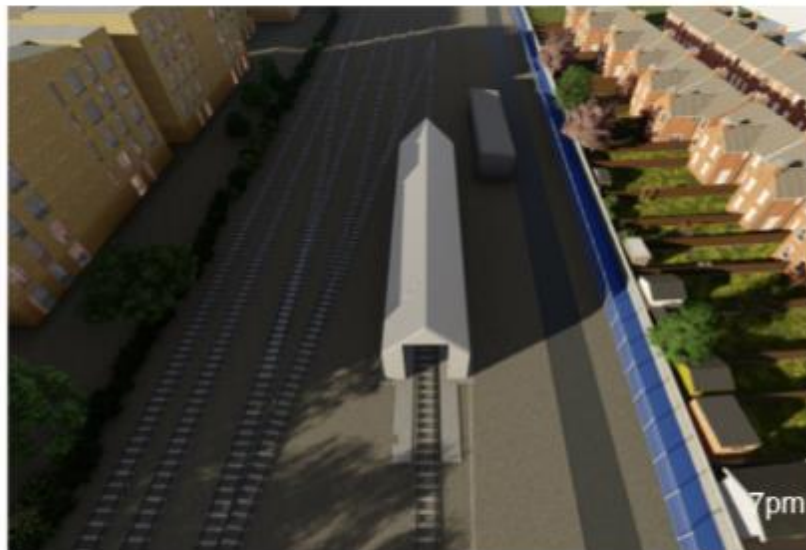
June 1st



June 1st



September 1st



September 1st

